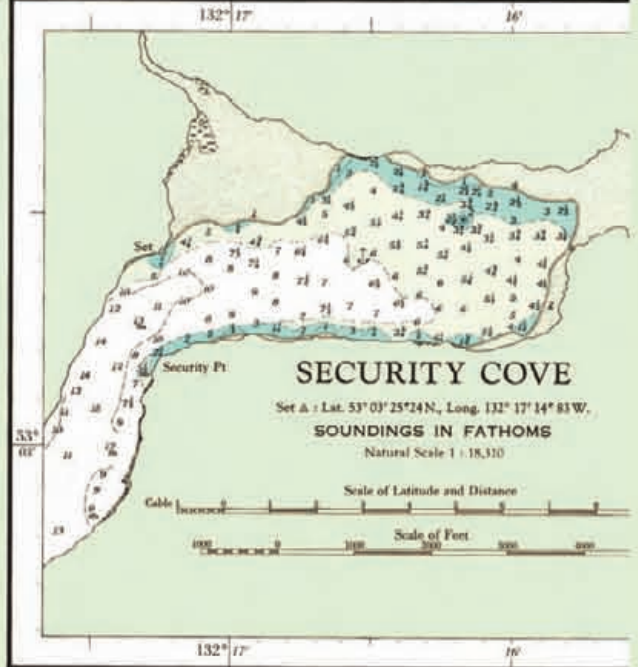
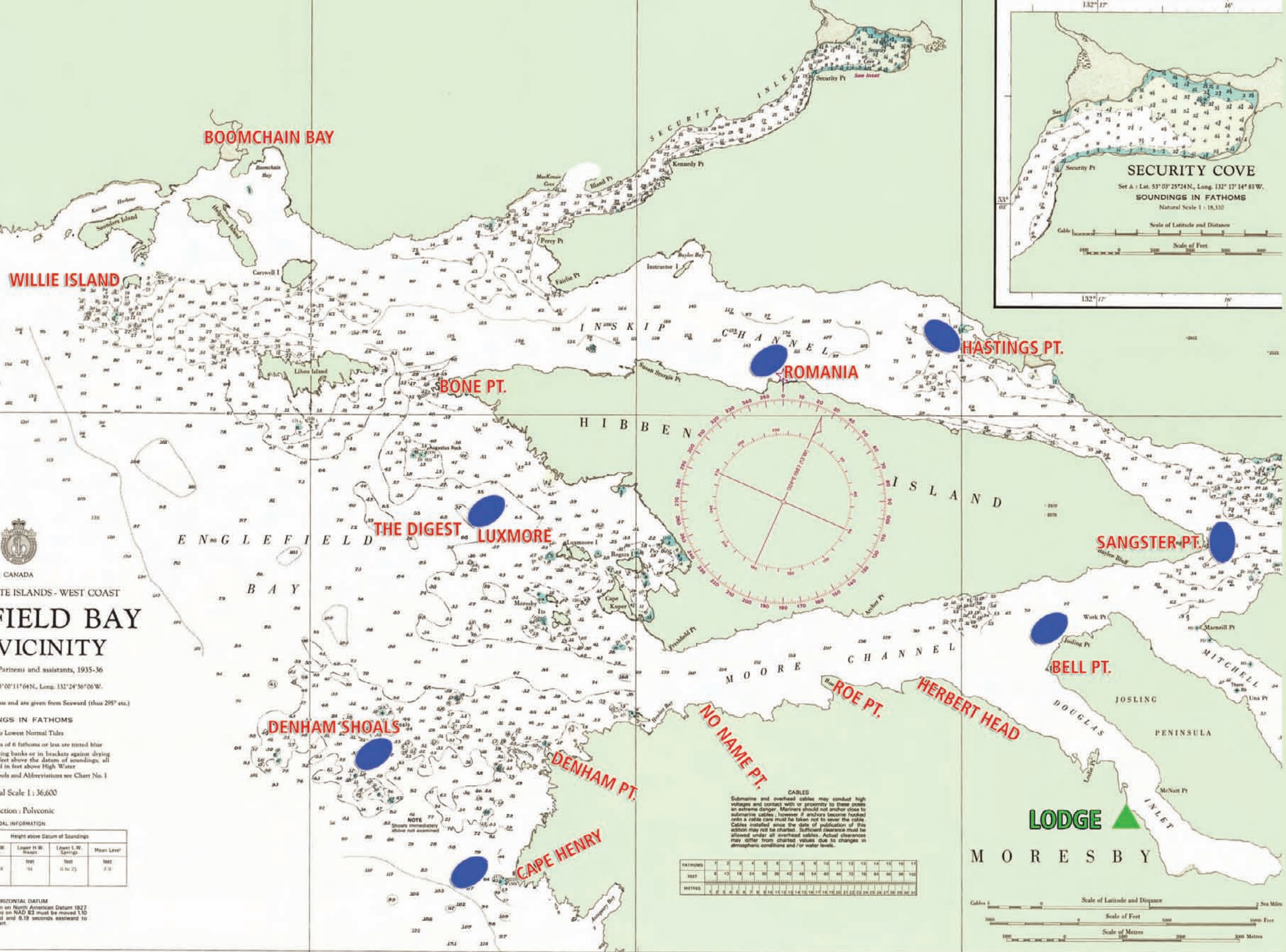




All depths are in fathoms.
1 fathom = 6 feet



QUEEN CHARLOTTE ISLANDS - WEST COAST
ENGLEFIELD BAY AND VICINITY

Surveyed by H. D. Parizeau and assistants, 1935-36
Lihou Island Δ: Lat. 53°00'11"64N, Long. 132°24'56"06W.
Bearings refer to the True Compass and are given from Seaward (thus 295° etc.)

SOUNDINGS IN FATHOMS
reduced to Lowest Normal Tides
Water areas with depths of 6 fathoms or less are tinted blue
Undeclined figures on drying banks or in brackets against drying rocks express heights in feet above the datum of soundings, all other heights are expressed in feet above High Water
For complete list of Symbols and Abbreviations see Chart No. 1

Natural Scale 1:36,600
Projection: Polyconic

PLACE	Height above Datum of Soundings			
	Higher H.W. Springs	Lower H.W. Neaps	Lower L.W. Springs	Mean Level
Tide Sound (Lat. 52°45'N, Long. 132°01'W)	feet 12 1/2 to 14	feet 9 1/2	feet 6 1/2 to 7 1/2	feet 7 1/2

HORIZONTAL DATUM
This chart is drawn on North American Datum 1927 (NAD 27). Positions on NAD 83 must be moved 130 seconds northward and 0.19 seconds eastward to agree with this chart.

CABLES
Submarine and overhead cables may conduct high voltages and contact with or proximity to these poses an extreme danger. Mariners should not anchor close to submarine cables, however if anchors become hooked onto a cable care must be taken not to sever the cables. Cables installed since the date of publication of this edition may not be charted. Sufficient clearance must be allowed under all overhead cables. Actual clearances may differ from charted values due to changes in atmospheric conditions and/or water levels.

FATHOMS	0	2	4	6	8	10	12	14	16	18	20
FEET	0	12	24	36	48	60	72	84	96	108	120
METRES	0	4	8	12	16	20	24	28	32	36	40

